



**Nethergate  
Academy**



[Nethergate Academy website](http://www.nethergateacademy.org)  
[www.nethergateacademy.org](http://www.nethergateacademy.org)



Twitter: [@NethergateAcad](https://twitter.com/NethergateAcad)



Uniform: [www.pbuniform-online.co.uk/nethergate](http://www.pbuniform-online.co.uk/nethergate)

Outgrown uniform would be greatly received

Shortbreaks: <http://www.nottinghamcity.gov.uk/ShortBreaks>

Applying for Transport - [www.nottinghamcity.gov.uk/information-for-residents/education-and-schools/travelling-to-school/school-transport-for-children-with-special-educational-needs/](http://www.nottinghamcity.gov.uk/information-for-residents/education-and-schools/travelling-to-school/school-transport-for-children-with-special-educational-needs/)

19 April 2024

Dear Parents/Carer

### Milk in School



School milk is provided free of charge to pupils who receive free school meals and for the sum of **£10.00 per term** for all other pupils. If you would like your child to have milk this term, please pay £10.00 via parentpay.



### Fruit in School



School offers all our pupils a fresh piece of fruit free of charge every day. As budgets become much tighter, we ask for a **voluntary donation of £10.00 per term** which is payable via parentpay. We appreciate your help.



Sign of the Week – Earth



### **Dates for your Diary**

Bank Holiday                      Monday 6 May

Half Term                              Monday 27 May to 31 May



## Sign of the Week

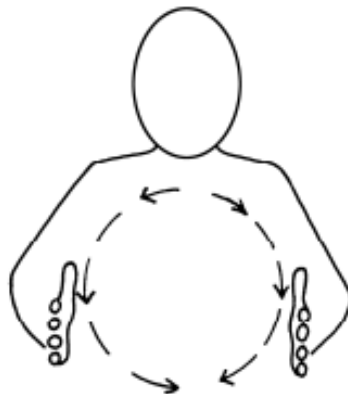
15<sup>th</sup> – 21<sup>st</sup> April 2024

This week's sign is 'Earth/ World'!

Join in with our Sign of the Week. Make and share your own video using the hashtag #WeTalkMakaton.



Earth/ World



Earth/ World